

DFB Laser Test Report

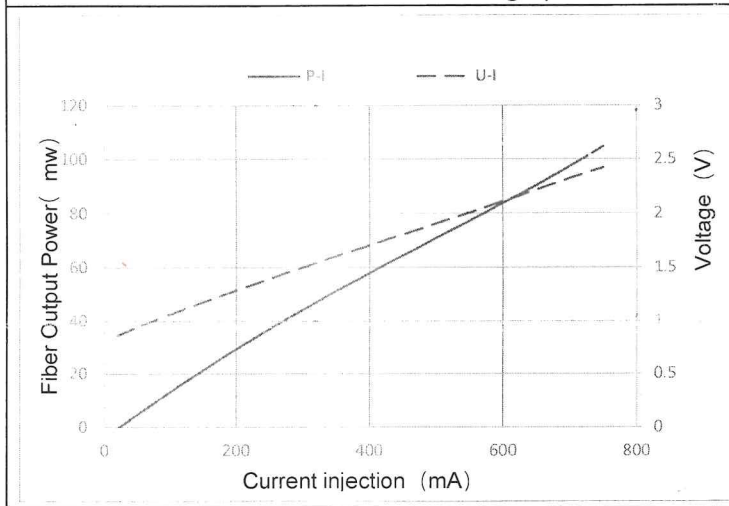
Product	Selected Wavelength Laser Diodes (SWLD-1550-100-PM(DFB))
Description	1550nm DFB laser diode with PM fiber pigtail,100mw,FC/APC connector
Serial Number	1911018579
Qualification	Telcordia GR-468

Optical and Electrical Data

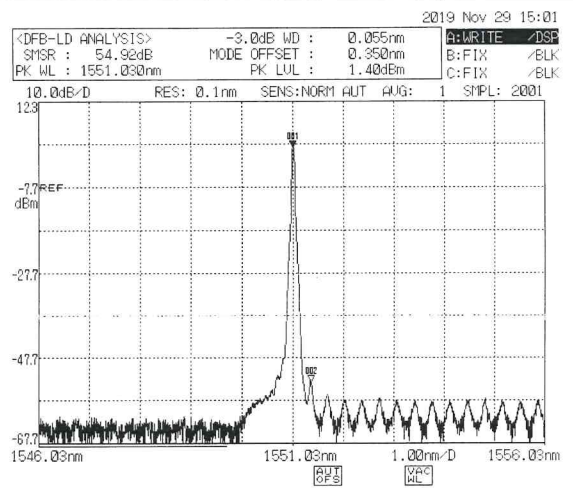
No.	Parameter	Symbol	Unit	Testing result	Requirement	Condition
1	Threshold current	I_{th}	mA	20	≤ 35	at25.0°C
2	Monitor PD current	I_{mpd}	uA	3068.3	50-5000	at100mW power
3	Bias at operation	I_o	mA	750	≤ 800	at100mW power
4	Slope efficiency	DE	mW/mA	0.143	0.05-0.30	at100mW power
5	Bias voltage	V_f	V	2.421	≤ 3	at100mW power
6	Operating temperature	T	°C	25	15-35	at100mW power
7	Thermistor resist	R	Ohm	10025	9500~10500	at25.0°C
8	Wavelength	λ_c	nm	1551.03	1550.92~1554	at100mW power
9	Extinction ratio	ER	dB	25.6	≥ 20	

NOTE: $I_{max}=800mA$

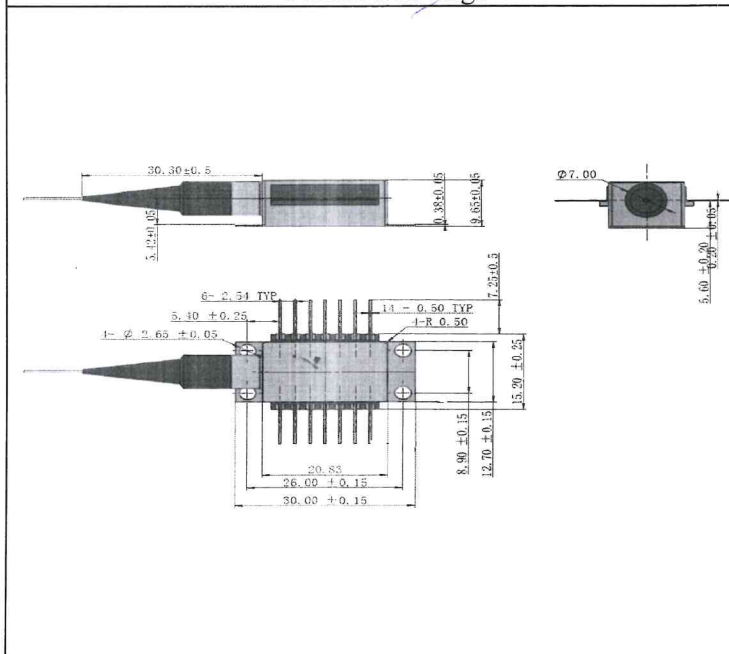
Laser Diode characteristic graph



Optical mapping and data

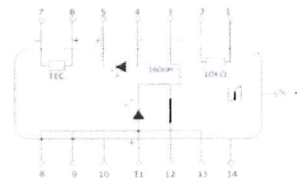


Outline Drawings



Dimensions are in millimeters.

Pin Information



1	Thermistor
2	Thermistor
3	Laser dc Bias (Cathode) (-)
4	PD Monitor Anode (-)
5	PD Monitor Cathode (+)
6	Thermoelectric Cooler (+)
7	Thermoelectric Cooler (-)
8	Case Ground
9	Case Ground
10	NC
11	Laser Anode (+),Case Ground
12	RF Laser Input Cathode (-)
13	Laser Anode (+),Case Ground
14	NC

End of the page

